



INSTALLATION INSTRUCTIONS

WINCH MOUNTING KIT

Part Number: 92450

Application: 2014 Honda Rancher and Foreman

GENERAL SAFETY PRECAUTIONS

Your safety, and the safety of others, is very important. To help you make informed decisions about safety, we have provided installation and operating instructions and other information on labels and in this guide. This information alerts you to potential hazards that could hurt you or others. It is not possible to warn you about all potential hazards associated with this product, you must use your own good judgment.

CARELESS INSTALLATION AND OPERATION CAN RESULT IN SERIOUS INJURY OR EQUIPMENT DAMAGE. READ AND UNDERSTAND ALL SAFETY PRECAUTIONS AND OPERATING INSTRUCTIONS BEFORE INSTALLING AND OPERATING THIS PRODUCT.

This guide identifies potential hazards and has important safety messages that help you and others avoid personal injury or death. **WARNING** and **CAUTION** are signal words that identify the level of hazard. These signal words mean:

▲ **WARNING** signals a hazard that could cause serious injury or death, if you do not follow recommendations. ▲ **CAUTION** signals a hazard that may cause minor to moderate injury, if you do not follow recommendations.

This guide uses **NOTICE** to call attention to important mechanical information, and **Note:** to emphasize general information worthy of special attention.

▲ WARNING

IMPACT AND MOVING PARTS ENTANGLEMENT HAZARD

Failure to observe these instructions could lead to severe injury or death

- Always use extreme caution when drilling on any vehicle. Make sure that all fuel lines, brake lines, electrical wires, and other objects are not punctured or damaged when / if drilling on the vehicle. Thoroughly inspect the area to be drilled (on both sides of material) prior to drilling, and relocate any objects that may be damaged. Failure to inspect the area to be drilled may result in vehicle damage, electrical shock, fire or personal injury.
- Always wear safety glasses when installing this kit. A drilling operation will cause flying metal chips. Flying chips can cause eye injury.
- Always use extreme caution when cutting and trimming during fitting.
- Always remove jewelry and wear eye protection.
- Never lean over battery while making connections.
- Never route electrical cables:
 - Across any sharp edges.
 - Through or near moving parts.
 - Near parts that become hot.
- Always insulate and protect all exposed wiring and electrical terminals.
- Always install terminal boots as directed in installation instructions.
- Always use appropriate and adequate care in lifting components into place.
- Always insure components will remain secure during installation and operation.
- Always tighten all nuts and bolts securely, per the installation and operation.
- Always perform regular inspections and maintenance on the winch, winch mount and related hardware.
- Never ever operate this WARN product with damaged or missing parts.

Read installation and operating instructions thoroughly.

WARN INDUSTRIES, INC. 12900 S.E. Capps Road,
Clackamas, OR USA 97015-8903, 1-503-722-1200, FAX: 1-503-722-3000
Customer Service: 1-800-543-9276
Dealer Locator Service: 1-800-910-1122
International Fax: 1-503-722-3005

⚠ CAUTION

MOVING PARTS ENTANGLEMENT HAZARD

Failure to observe these instructions could lead to minor or moderate injury

- Always take time to fully read and understand the Installation and Operations Guide included with this product.
- Never operate this product if you are under 16 years of age.
- Never operate this product when under the influence of drugs, alcohol or medications.

Read installation and operating instructions thoroughly.

NOTICE

EQUIPMENT DAMAGE

- Always refer to the installation and Specification Guide, supplied in the winch kit, for all wiring schematics and specific details on how to wire this WARN product to your vehicle.

Read installation and operating instructions thoroughly.

BEFORE YOU BEGIN

This kit is compatible with WARN's line of ATV winches. Winch is sold separately. Please read WARN's Winching Technique guide and winch installation guide provided with the winch prior to installation and use of this product.

Not all the hardware required to install a winch is included in this mounting kit. Some hardware will be used from Warn Winch kit.

Before beginning winch installation, allow the engine and exhaust system to cool and disconnect the negative cable from the battery

TABLE OF CONTENTS

Tools Required.....	page 2
Torque Specifications.....	page 2
Parts List.....	page 3
Installation.....	page 4 - 9
Maintenance/Care.....	page 10

TOOLS REQUIRED

- Ratchet
- Torque Wrench
- Sockets: 10mm, 12mm, 13mm, 16mm
- Wrenches: 10mm, 12mm, 13mm, 16mm
- Screwdrivers: Slotted, Phillips
- Allen Wrenches: 1/8", 5mm
- Sidecutters or Utility knife
- Voltmeter or Test Light
- Electric Tape

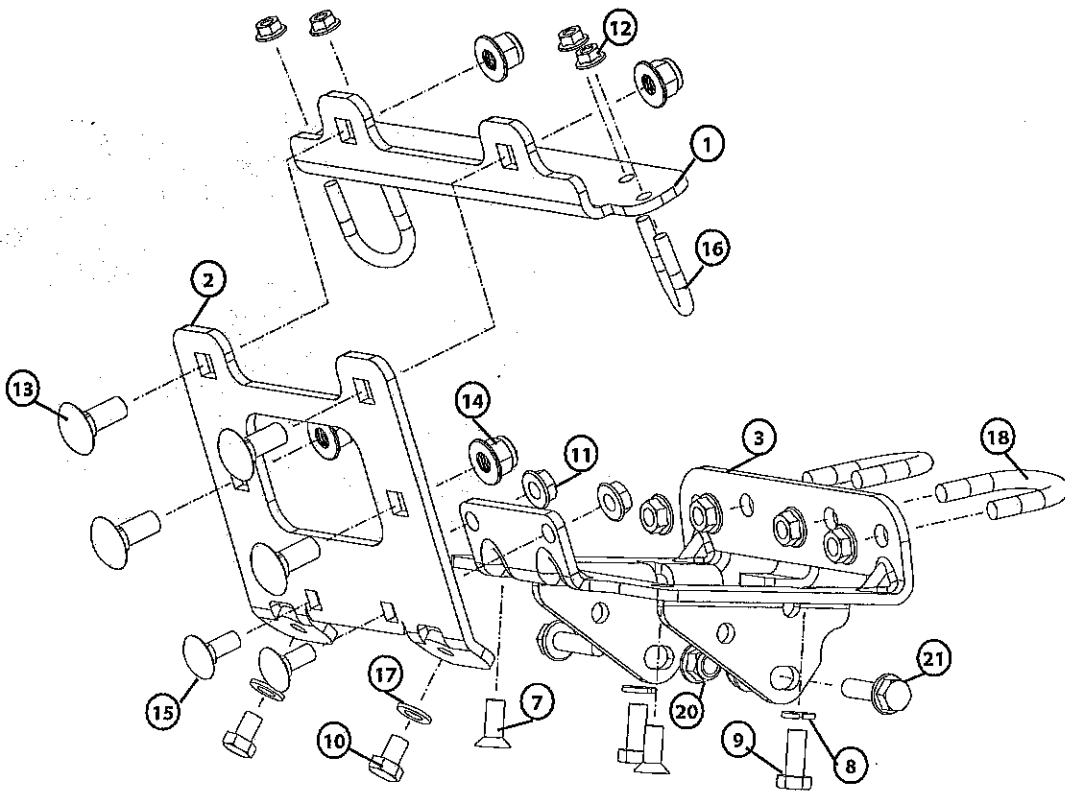
TORQUE SPECIFICATIONS

Please use the recommended torque specifications when assembling this product unless otherwise specified in the instructions.

FASTENER SIZE	FASTENER TORQUE		FASTENER SIZE	FASTENER TORQUE	
	lb-ft	(N.m)		lb-ft	(N.m)
1/4"	8	(11)	M4	(2)	3
5/16"	17	(23)	M5	(4.5)	6
3/8"	30	(40)	M6	(7.5)	10
7/16"	48	(66)	M8	(18)	25
1/2"	74	(100)	M10	(37)	50
9/16"	106	(144)			
5/8"	148	(200)			
3/4"	269	(364)			

PARTS LIST

Item	Part Number	Qty	Description
1	92454	1	Winch Mount Plate
2	92453	1	Fairlead Bracket
3	92452	1	Winch Mount Bracket
7	91161	2	M8 - 1.25 x 20mm Flat Hex Head Capscrew
8	82197	2	M8 Lock Washer
9	81813	2	M8 - 1.25 x 20 Hex Capscrew
10	26744	2	M8 - 1.25 x 12 Hex Head Capscrew
11	66129	6	M8 x 1.25 Flanged LockNut
12	83125	4	M6 x 1.0 Hex Nut Flanged
13	85749	4	M10 x 1.5 x 25 Carriage Bolt
14	91162	4	M10 x 1.5 Nylon Hex Lock Nut
15	92013	2	M8 x 1.25 x 20 Carriage Bolt
16	62066	2	6mm - 1.0 x 24mm x 37mm U-bolt
17	93105	2	M8 Flat Washer
18	79413	2	M8 - 1.25 x 31 x 41 U-bolt
20	79146	2	M8 x 1.25 Hex Nut Flange
21	64110	2	M8 - 1.25 x 30 Hex Head Flange Capscrew



INSTALLATION INSTRUCTIONS

1. Remove the six front 6mm bolts and two clip pins holding plastic guards in place. See Figure 1.

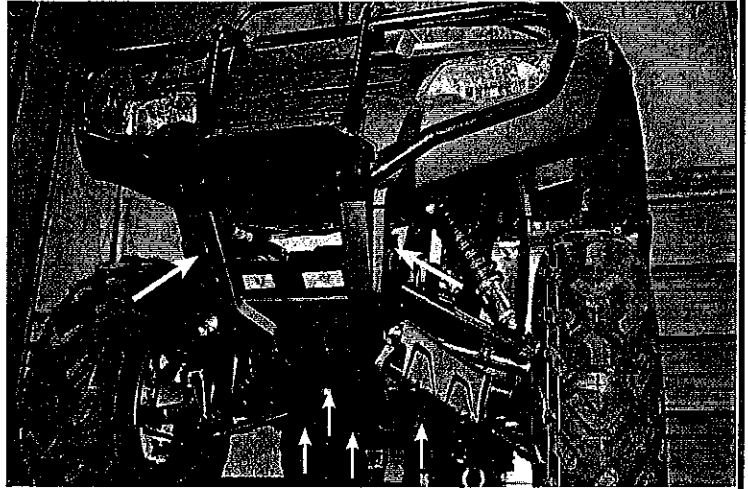


Figure 1

2. Partially remove bottom plastic guard. See Figure 2.



Figure 2

3. Remove the 6mm bolts from left and right side of brushguard. See Figure 3.

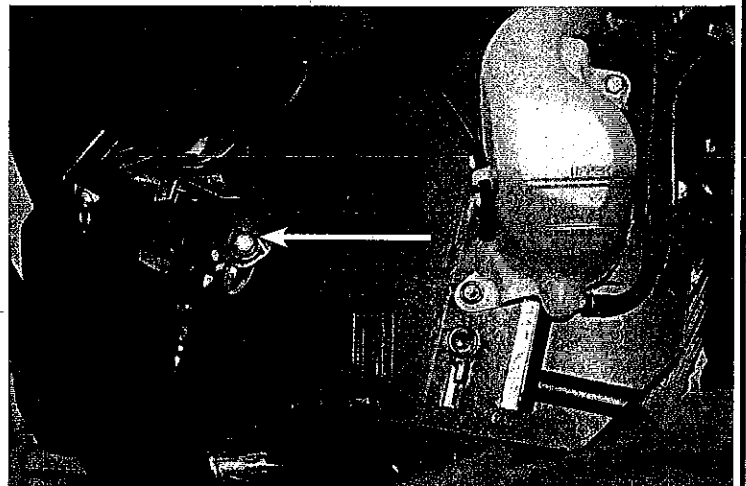


Figure 3

INSTALLATION INSTRUCTIONS

4. Remove the six M8 bolts securing brush guard to frame. See Figure 4.

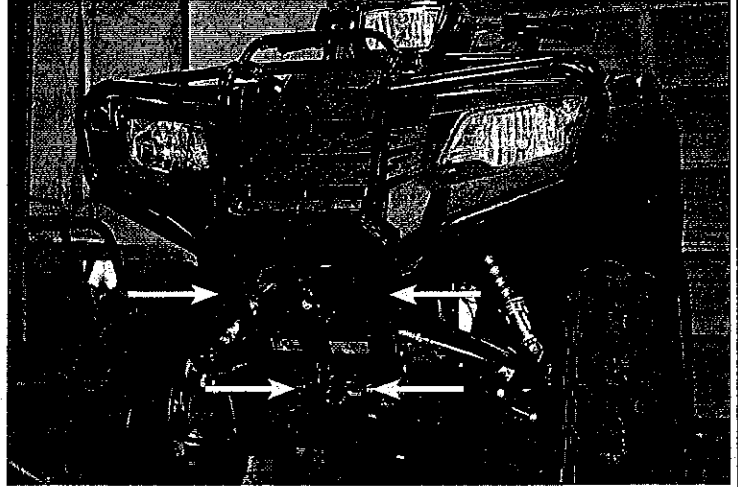


Figure 4

5. Remove brush guard from frame.

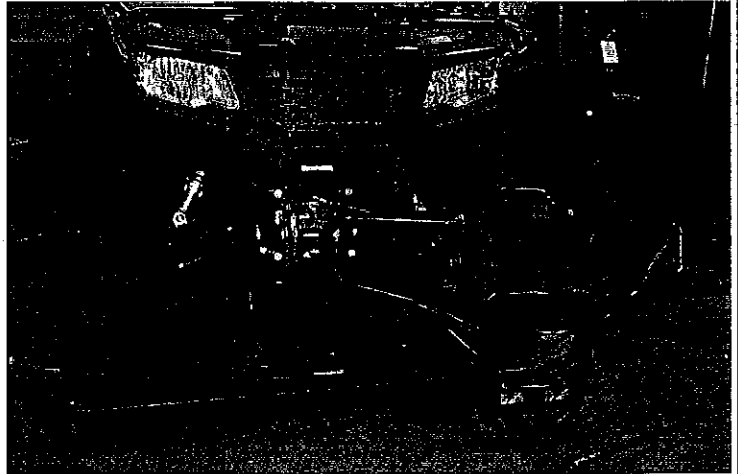


Figure 5

6. Attach fairlead to fairlead mounting bracket using the 10mm carriage bolts and 10mm lock nuts.

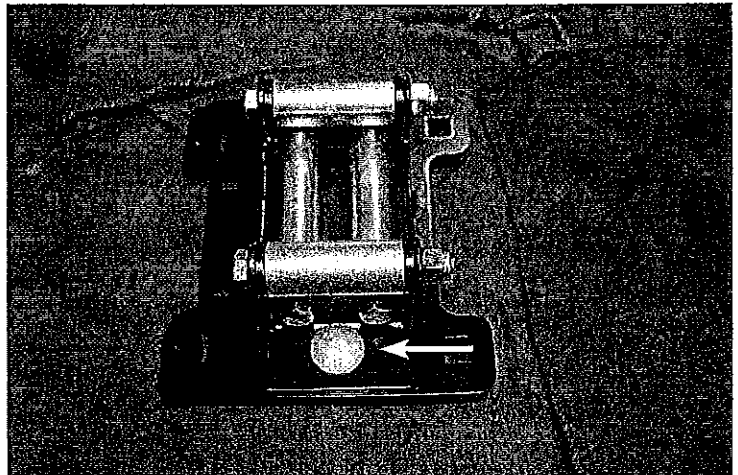


Figure 6

INSTALLATION INSTRUCTIONS

7. Attach winch mounting bracket to fairlead mounting bracket using the 8mm carriage bolts and 8mm lock nuts. **DO NOT TIGHT COMPLETELY AT THIS TIME.**

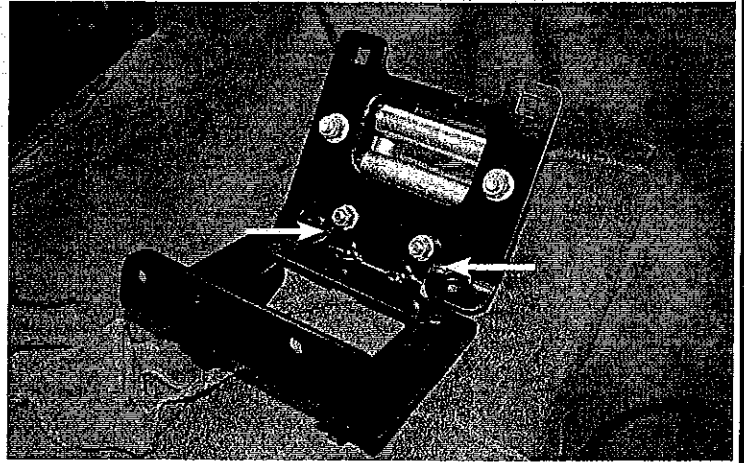


Figure 7

8. Attach winch to winch mounting plate as shown in Figure 8a.

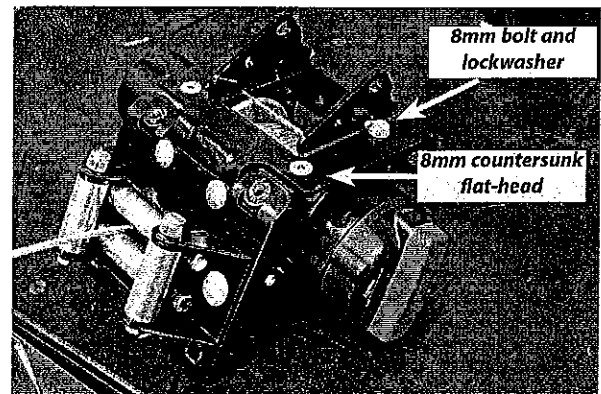


Figure 8a

Note the orientation of winch. For this application, the rope should pull from the top of the drum as shown in Figure 8b.

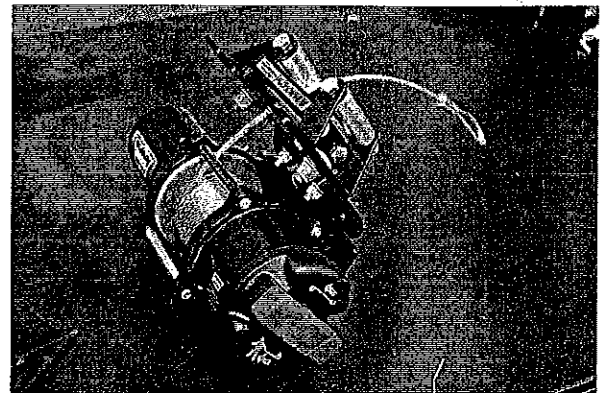


Figure 8b

9. Attach winch assembly to brush guard, using two 8mm flange head bolts as shown in Figure 9.

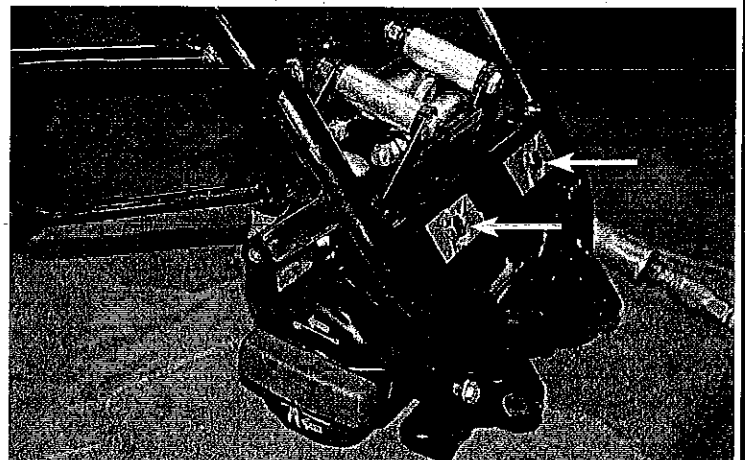


Figure 9

INSTALLATION INSTRUCTIONS

10. Install cross plate using 6mm u-bolts and lock nuts.

Next, bolt the cross plate to the fairlead mounting bracket using 10mm carriage bolts with 10mm lock nuts.

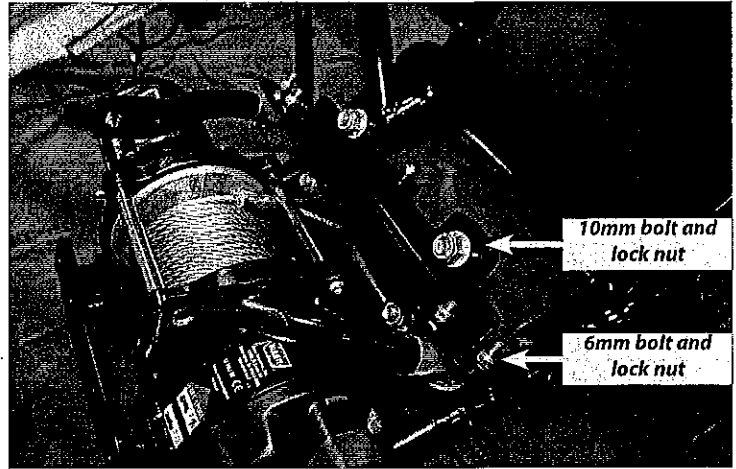


Figure 10

11. Hang brushguard on front of vehicle. Fasten upper portion of brushguard by reusing four stock 8mm bolts and nuts. Fasten the lower portion using two new, longer, 8mm bolts and nuts found in this kit. See Figure 11.

Reminder: You will use two longer bolts found in this kit for the lower portion of brushguard install.

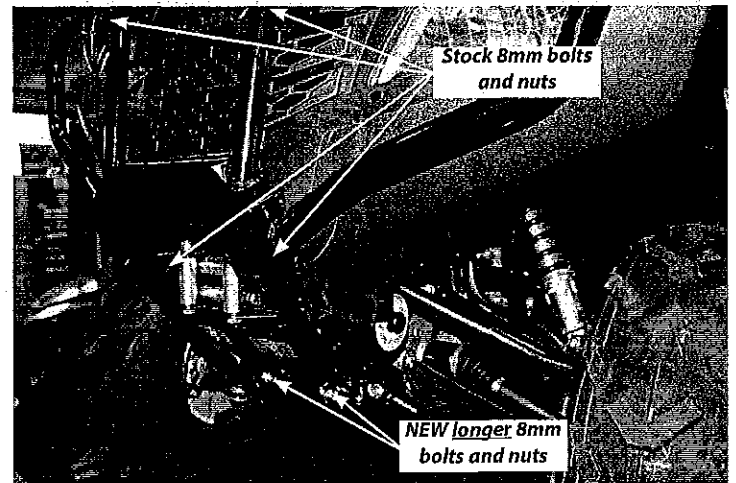


Figure 11

12. Attach the rear of the winch mounting bracket using the 8mm u-bolts provided and 8mm flanged nuts. See Figure 12.

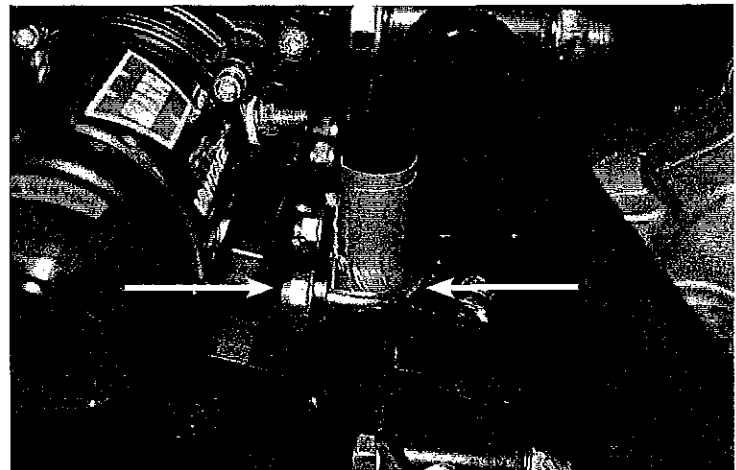


Figure 12

INSTALLATION INSTRUCTIONS

13. At this point ensure that all hardware has been tightened. For torque specifications reference page 3 of this instruction booklet.

Be sure to tighten the nuts attaching the winch mounting plate to the fairlead mounting bracket, as shown in Figure 13.

⚠ WARNING

IMPACT AND MOVING PARTS ENTANGLEMENT HAZARD

Failure to observe these instructions could lead to severe injury or death

- Always tighten all nuts and bolts securely, per the installation and operation. Failure to check all nuts and bolts prior to use can result in product failure which can lead to vehicle damage and operator injury or death.

Read installation and operating instructions thoroughly.

14. The winch rope unwinds off the top of the drum for this mounting configuration. Route the winch rope through the fairlead and attach the hook assembly from the warn winch kit using the pin and cotter provided. See Figures 14 and 15.

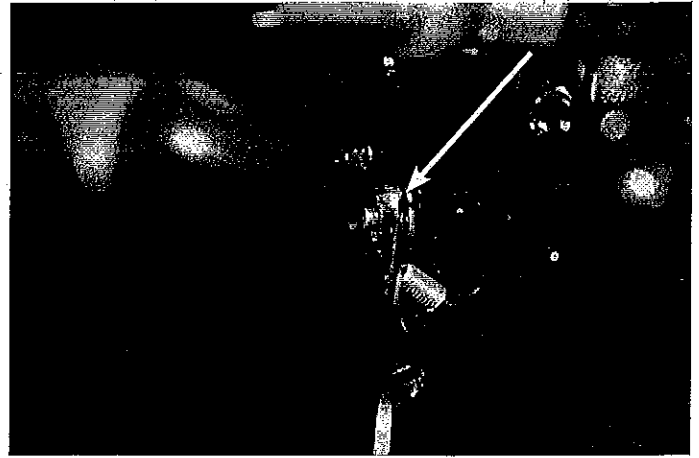


Figure 13

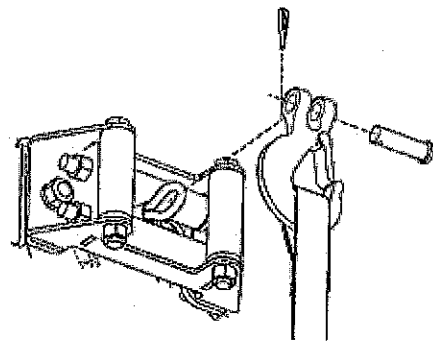


Figure 14

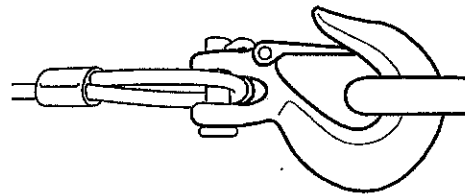


Figure 15

15. Complete the winch installation as described in the winch installation and specification guide that came with the winch.

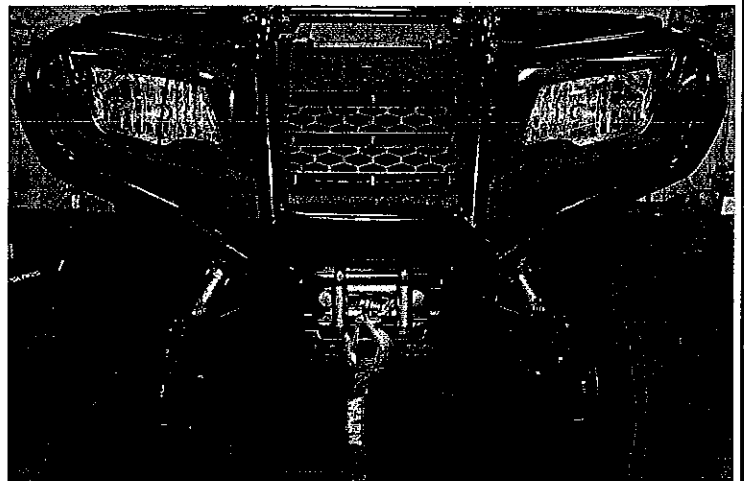


Figure 16

INSTALLATION INSTRUCTIONS

▲ NOTICE

- It should be noted that the following instructions are **ATV specific only**. The following instructions should be referred to as reference instructions to assist wiring the winch from the installation and specification guide supplied in the winch kit.

16. The suggested mounting location for the winch contactor is under the plastic cover just behind the seat as shown in Figure 17.

▲ WARNING

IMPACT AND MOVING PARTS ENTANGLEMENT HAZARD

Failure to observe these instructions could lead to severe injury or death

- Avoid all moving and potentially hot components of vehicle when routing electrical cables. Avoid areas where the wiring could be pinched when components are reinstalled. Failure to do so can result in product failure which can lead to vehicle damage and operator injury or death.

Read installation and operating instructions thoroughly.

17. To install the contactor you must first remove the fuse box by pressing the button on the front side of the plastic as shown in Figure 18.

18. With the contactor terminals facing the rear of the vehicle, install contactor beneath the fuse box location.

Drill two holes in the plastic and use the hardware provided in the your WARN winch kit to fasten the flanges of the contactor to the vehicle.

Reinstall fuse box and plastic guards removed in step 1 and 15. Installation is complete.

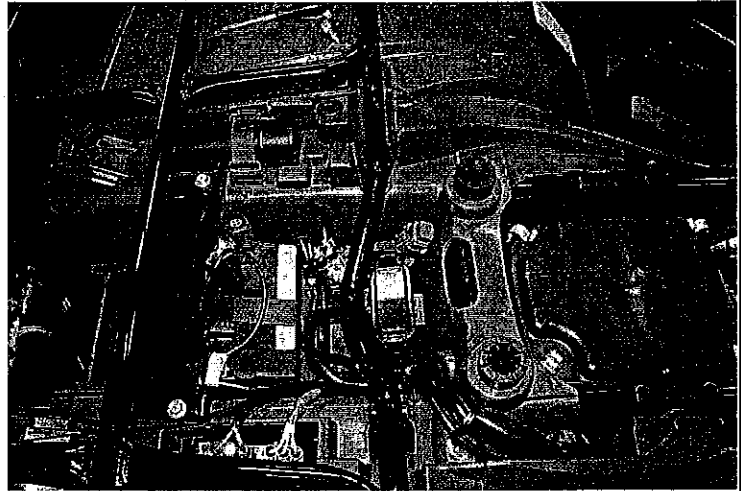


Figure 17

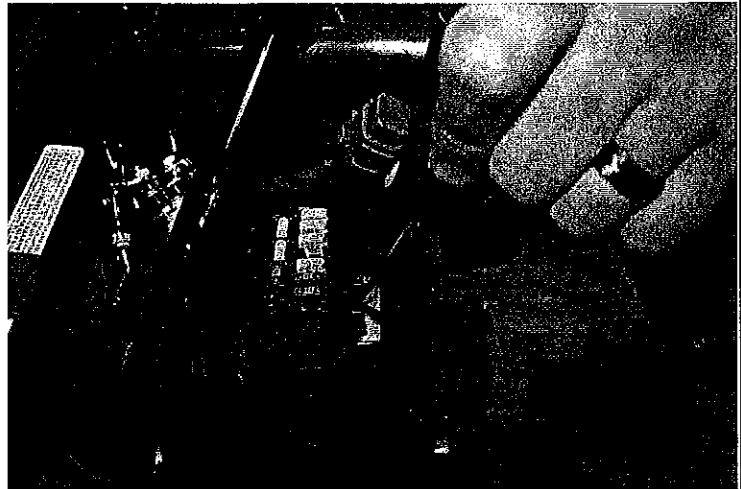


Figure 18

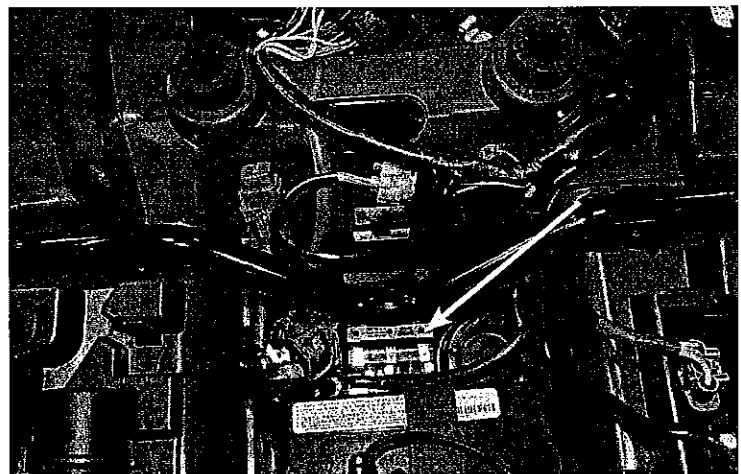


Figure 19

MAINTENANCE / CARE

1. Inspect all parts on the winch, winch mount, and related hardware prior to each use. Replace all hardware that appears rusted or deformed.
2. Inspect all nuts and bolts on the winch, winch mount, and related hardware prior to each use. Tighten all nuts that appear to be loose. Stripped, fractured, or bent bolts or nuts need to be replaced.
3. Check all cables prior to use. Replace cables that look worn or frayed.
4. Check all moving or rotating parts. Remove debris that may inhibit the part from moving freely.

CARELESS INSTALLATION AND OPERATION CAN RESULT IN SERIOUS INJURY OR EQUIPMENT DAMAGE. READ AND UNDERSTAND ALL SAFETY PRECAUTIONS AND OPERATING INSTRUCTIONS BEFORE INSTALLING AND OPERATING THIS PRODUCT.

