



# INSTALLATION INSTRUCTIONS WINCH MOUNTING KIT

Part Number: 87180

Application: 2012 + Honda Foreman 500

## GENERAL SAFETY PRECAUTIONS

Your safety, and the safety of others, is very important. To help you make informed decisions about safety, we have provided installation and operating instructions and other information on labels and in this guide. This information alerts you to potential hazards that could hurt you or others. It is not possible to warn you about all potential hazards associated with this product, you must use your own good judgment.

**CARELESS INSTALLATION AND OPERATION CAN RESULT IN SERIOUS INJURY OR EQUIPMENT DAMAGE. READ AND UNDERSTAND ALL SAFETY PRECAUTIONS AND OPERATING INSTRUCTIONS BEFORE INSTALLING AND OPERATING THIS PRODUCT.**

This guide identifies potential hazards and has important safety messages that help you and others avoid personal injury or death. WARNING and CAUTION are signal words that identify the level of hazard. These signal words mean: **▲WARNING** signals a hazard that could cause serious injury or death, if you do not follow recommendations. **▲CAUTION** signals a hazard that may cause minor to moderate injury, if you do not follow recommendations.

This guide uses NOTICE to call attention to important mechanical information, and Note: to emphasize general information worthy of special attention.

### **▲** WARNING

#### IMPACT AND MOVING PARTS ENTANGLEMENT HAZARD

Failure to observe these instructions could lead to severe injury or death

- Always use extreme caution when drilling on any vehicle. Make sure that all fuel lines, brake lines, electrical wires, and other objects are not punctured or damaged when / if drilling on the vehicle. Thoroughly inspect the area to be drilled (on both sides of material) prior to drilling, and relocate any objects that may be damaged. Failure to inspect the area to be drilled may result in vehicle damage, electrical shock, fire or personal injury.
- Always wear safety glasses when installing this kit. A drilling operation will cause flying metal chips. Flying chips can cause eye injury.
- Always use extreme caution when cutting and trimming during fitting.
- Always remove jewelry and wear eye protection.
- Never lean over battery while making connections.
- Never route electrical cables:
  - Across any sharp edges.
  - Through or near moving parts.
  - Near parts that become hot.
- Always insulate and protect all exposed wiring and electrical terminals.
- Always install terminal boots as directed in installation instructions.
- Always use appropriate and adequate care in lifting components into place.
- Always insure components will remain secure during installation and operation.
- Always tighten all nuts and bolts securely, per the installation and operation.
- Always perform regular inspections and maintenance on the winch, winch mount and related hardware.
- Never operate this WARN product with damaged or missing parts.

Read installation and operating instructions thoroughly.

WARN INDUSTRIES, INC. 12900 S.E. Capps Road,  
Clackamas, OR USA 97015-8903, 1-503-722-1200, FAX: 1-503-722-3000  
Customer Service: 1-800-543-9276  
Dealer Locator Service: 1-800-910-1122  
International Sales/Customer Service: 1-503-722-3008  
International Fax: 1-503-722-3005

## ⚠ CAUTION

### MOVING PARTS ENTANGLEMENT HAZARD

Failure to observe these instructions could lead to minor or moderate injury

- Always take time to fully read and understand the installation and Operations Guide included with this product.
- Never operate this product if you are under 16 years of age.
- **Never operate this product when under the influence of drugs, alcohol or medications.**

Read installation and operating instructions thoroughly.

## NOTICE

### EQUIPMENT DAMAGE

- **Always refer to the Installation and Specification Guide, supplied in the winch kit, for all wiring schematics and specific details on how to wire this WARN product to your vehicle.**

Read installation and operating instructions thoroughly.

## BEFORE YOU BEGIN

This kit is compatible with WARN's line of ATV winches. Winch is sold separately. Please read WARN's Winching Technique guide and winch installation guide provided with the winch prior to installation and use of this product.

Not all the hardware required to install a winch is included in this mounting kit. Some hardware will be used from Warn Winch kit.

Before beginning winch installation, allow the engine and exhaust system to cool and disconnect the negative cable from the battery

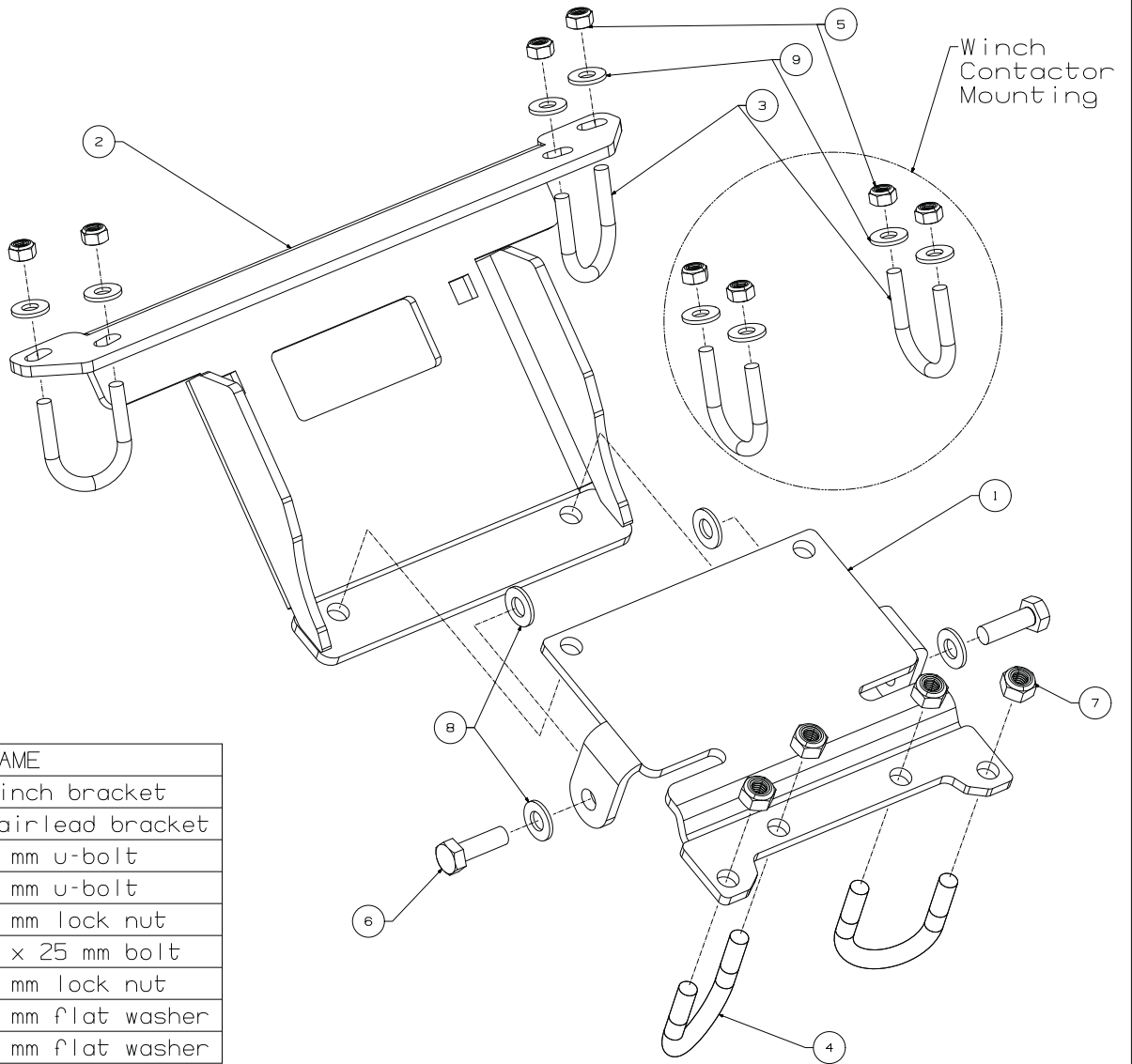
## TOOLS REQUIRED

- Ratchet
- Torque Wrench
- Sockets: 10mm, 12mm, 13mm, 15mm, 17mm
- Wrenches: 10mm, 12mm, 13mm, 15mm, 17mm
- Screwdrivers: Slotted, Phillips
- Allen Wrenches: 1/8", 5mm
- Sidecutters or Utility knife
- Voltmeter or Test Light
- Electric Tape

## TORQUE SPECIFICATIONS

6mm bolts - 12 N-m (9 ft-lb)  
6mm U-bolts - 7 N-m (5 ft-lb)  
8mm bolts - 16 N-m (12 ft-lb)  
8mm U-bolts - 13 N-m (10 ft-lb)  
10mm bolts - 47 N-m (35 ft-lb)

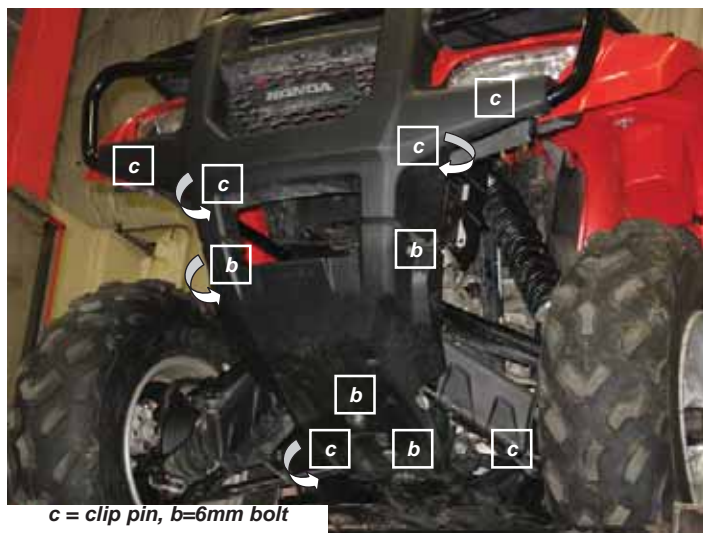
# PARTS LIST



ITEM	QTY	NAME
1	1	Winch bracket
2	1	Fairlead bracket
3	4	6 mm u-bolt
4	2	8 mm u-bolt
5	8	6 mm lock nut
6	2	8 x 25 mm bolt
7	4	8 mm lock nut
8	4	8 mm flat washer
9	8	6 mm flat washer

## INSTALLATION INSTRUCTIONS

1. Remove front 6mm bolts and clip pins from plastic guards as shown.



2. Partially remove bottom plastic guard and remove two lower factory front tube bolts.

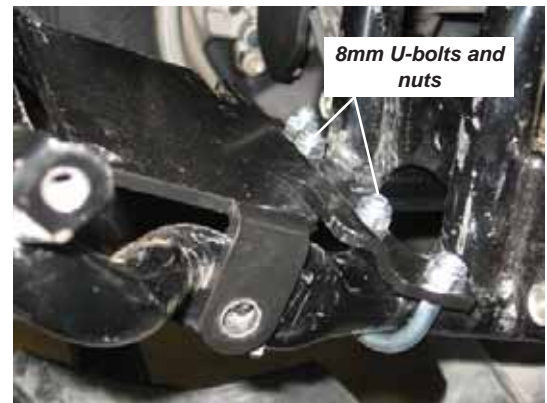


3. Remove front plastic guard and loosen four upper factory front tube bolts.



## INSTALLATION INSTRUCTIONS

4. Install winch bracket using 8mm U-bolts and lock nuts. Tighten evenly and torque to specification shown on page 3.



5. Loosen outer U-bolt nuts only.



6. Partially install winch over mount bracket with the motor end first. Install ONE 8mm x 20mm long bolt and lock washer from Warn winch kit in lower hole – do not tighten. Leave bolt and washer loose enough to allow them to slide under winch bracket. Push up on winch bracket to gain clearance for the bolt to slide into the slot.





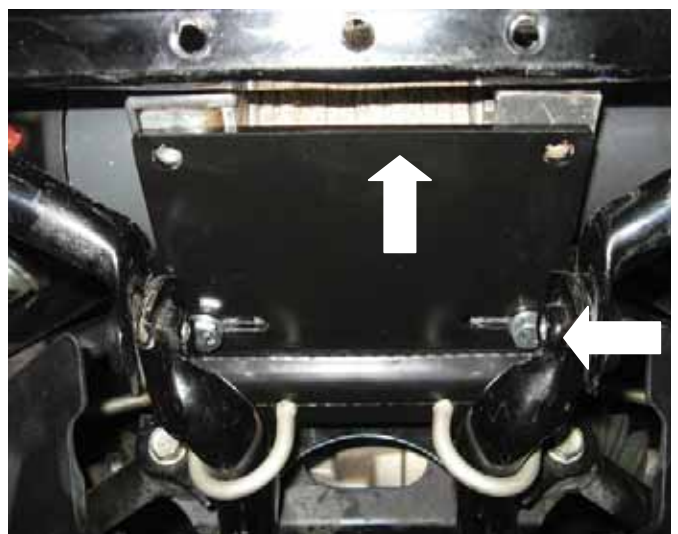
## INSTALLATION INSTRUCTIONS



7. Slide winch toward center while aligning bolt and washer with slot. Slide until the end of the slot is reached. Install a second 8mm x 20mm long bolt and lock washer from Warn winch kit.



8. Push up on winch bracket to gain clearance for the second bolt to slide into the slot. Slide the winch toward center while aligning the second bolt with the slot.



## INSTALLATION INSTRUCTIONS

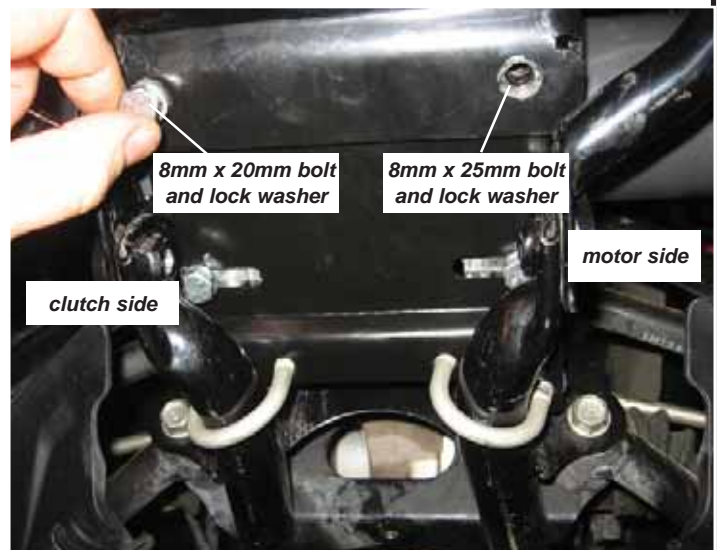
9. Install fairlead to fairlead bracket using 10mm bolts, nuts and lock washers from Warn winch kit. Tighten bolts and torque to specification shown on page 3.



10. Install fairlead bracket UNDER winch mount plate.



11. Align the upper winch holes with the upper holes in the winch mount bracket and fairlead bracket. In the motor side of winch, install ONE 8mm x 25mm long bolt and lock washer from Warn winch kit– do not tighten. For the other upper mounting hole, install an 8mm x 20mm long bolt and lock washer from Warn winch kit– do not tighten. Tighten lower bolts only to recommended torque specification on page 3. Push up on winch mount bracket if necessary to gain clearance for tightening.



## INSTALLATION INSTRUCTIONS

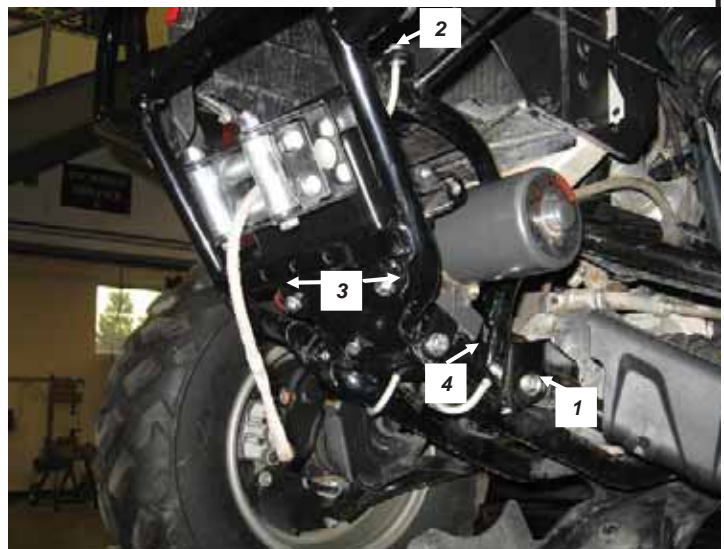
12. Install 8mm bolts and flat washers, one under the bolt head and one under bracket flange – Do not tighten.



13. Install 6mm U-bolts, lock nuts, and flat washers around front tube and through fairlead mount bracket.



14. Tighten all fasteners in the order shown. Refer to torque values listed on page 3 for recommended values.



### WARNING

#### IMPACT AND MOVING PARTS ENTANGLEMENT HAZARD

Failure to observe these instructions could lead to severe injury or death

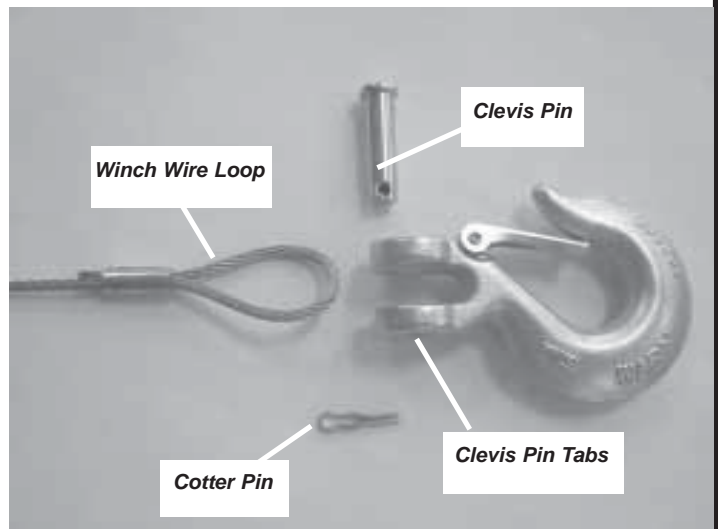
- Always tighten all nuts and bolts securely, per the installation and operation. Failure to check all nuts and bolts prior to use can result in product failure which can lead to vehicle damage and operator injury or death.

Read installation and operating instructions thoroughly.



## INSTALLATION INSTRUCTIONS

15. The winch rope unwinds off the top of the drum for this mounting configuration. Route the winch rope through the fairlead and attach the hook assembly from the Warn winch kit using the pin and cotter provided.



## INSTALLATION INSTRUCTIONS

### Honda Foreman Specific Wiring

#### **▲ NOTICE**

- It should be noted that the following instructions are ATV specific only. The following instructions should be referred to as reference instructions to assist wiring the winch from the installation and specification guide supplied in the winch kit.

16. Complete the winch installation as described in the winch installation and specification guide that came with the winch. The suggested mounting location for the winch contactor is under the plastic cover just behind the seat as shown. Use 6mm U-bolts, lock nuts and flat washer included in this kit.



## INSTALLATION INSTRUCTIONS

17. The suggested routing for the blue and yellow winch power cables is shown below. This routing requires removing the plastic from the right hand side and routing wires along the same path with the factory vehicle wires. Use cable ties and tape to secure power cables along routing.

### WARNING

#### IMPACT AND MOVING PARTS ENTANGLEMENT HAZARD

Failure to observe these instructions could lead to severe injury or death

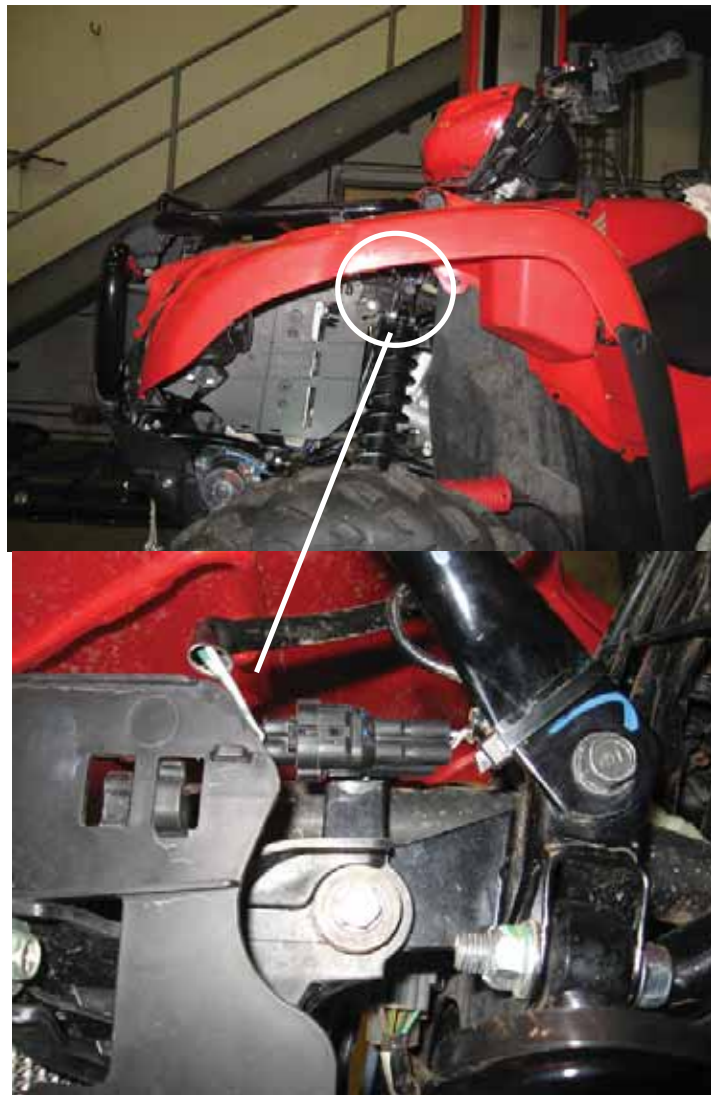
- Avoid all moving and potentially hot components of ATV when routing electrical cables. Avoid areas where the wiring could be pinched when components are reinstalled. Failure to do so can result in product failure which can lead to vehicle damage and operator injury or death.

Read installation and operating instructions thoroughly.



## INSTALLATION INSTRUCTIONS

18. The suggested keyed power source required for the winch is a white-black strip wire that connects to the vehicle power port. Use the wire splice connector provided with the Warn winch kit to connect the red rocker switch wire.



19. Reinstall plastic guards removed in step one. Installation is complete.





## MAINTENANCE / CARE

- Inspect all metal parts on the winch, winch mount, and related hardware. Replace all that appears rusted, cracked or deformed prior to use.
- Inspect all nuts and bolts on the winch, winch mount, and related hardware prior to each use. Tighten all nuts and bolts that are loose. Missing, stripped, fractured, or bent bolts or nuts need to be replaced immediately.
- Check all cables prior to use. Replace cables that are worn or frayed.
- Check all moving and rotating parts. Remove debris that may inhibit the part from moving freely.

### WARNING

#### IMPACT AND MOVING PARTS ENTANGLEMENT HAZARD

Failure to observe these instructions could lead to severe injury or death

- Avoid all moving and potentially hot components of ATV when routing electrical cables. Avoid areas where the wiring could be pinched when components are reinstalled. Failure to do so can result in product failure which can lead to vehicle damage and operator injury or death.

Read installation and operating instructions thoroughly.

CARELESS INSTALLATION AND OPERATION CAN RESULT IN SERIOUS INJURY OR EQUIPMENT DAMAGE. READ AND UNDERSTAND ALL SAFETY PRECAUTIONS AND OPERATING INSTRUCTIONS BEFORE INSTALLING AND OPERATING THIS PRODUCT.

