



INSTALLATION INSTRUCTIONS

PLOW MOUNT KIT

Part Number: 100390

Application: 2014+ HONDA RANCHER AND FOREMAN

GENERAL SAFETY PRECAUTIONS

Your safety, and the safety of others, is very important. To help you make informed decisions about safety, we have provided installation and operating instructions and other information on labels and in this guide. This information alerts you to potential hazards that could hurt you or others. It is not possible to warn you about all potential hazards associated with this product, you must use your own good judgment.

CARELESS INSTALLATION AND OPERATION CAN RESULT IN SERIOUS INJURY OR EQUIPMENT DAMAGE. READ AND UNDERSTAND ALL SAFETY PRECAUTIONS AND OPERATING INSTRUCTIONS BEFORE INSTALLING AND OPERATING THIS PRODUCT.

This guide identifies potential hazards and has important safety messages that help you and others avoid personal injury or death. WARNING and CAUTION are signal words that identify the level of hazard. These signal words mean:

▲WARNING signals a hazard that could cause serious injury or death, if you do not follow recommendations. **▲CAUTION** signals a hazard that may cause minor to moderate injury, if you do not follow recommendations.

This guide uses **NOTICE** to call attention to important mechanical information, and Note: to emphasize general information worthy of special attention.

▲WARNING

IMPACT AND MOVING PARTS ENTANGLEMENT HAZARD

Failure to observe these instructions could lead to severe injury or death

- **Always** Read the Plow Operator's Manual, the Winch Operator's Manual and all warning labels before operating.
- **Always** use extreme caution when drilling on any vehicle. Make sure that all fuel lines, brake lines, electrical wires, and other objects are not punctured or damaged when/if drilling on the vehicle. Thoroughly inspect the area to be drilled (on both sides of material) prior to drilling, and relocate any objects that may be damaged. Failure to inspect the area to be drilled may result in vehicle damage, electrical shock, fire or personal injury.
- **Always** wear safety glasses when installing this kit. A drilling operation will cause flying metal chips. Flying chips can cause eye injury.
- **Always** use extreme caution when cutting and trimming during fitting.
- **Always** remove jewelry and wear eye protection.
- **Never** lean over battery while making connections.
- **Never** route electrical cables:
 - o Across any sharp edges.
 - o Through or near moving parts.
 - o Near parts that become hot.
- **Always** insulate and protect all exposed wiring and electrical terminals.
- **Always** install terminal boots as directed in installation instructions.
- **Always** use appropriate and adequate care in lifting components into place.
- **Always** insure components will remain secure during installation and operation.
- **Always** tighten all nuts and bolts securely, per the installation instructions.
- **Always** operate the vehicle at a walking speed with the blade installed. Never exceed 5 mph (8 km/h), even with blade up.
- **Always** plow cautiously, impact with hidden or stationary object may cause the vehicle to stop suddenly or go out of control.
- **Never** operate the vehicle on slopes greater than 10 degrees with the plow installed.
- **Never** stand or ride on the plow.
- **Always** stay clear of moving parts and joints. Always keep others away when operating or adjusting plow.
- **Always** perform regular inspections and maintenance on the plow mechanism, fasteners, cable and related hardware.
- **Always** replace all worn or damaged parts before operating.
- **Never** operate this WARN product with damaged or missing parts.
- **Always** drive slowly over bumpy and rough terrain. Driving at speeds that cause the plow to bounce while in the up position can cause the winch to back-drive, causing the plow to work its way down. This may result in the plow impacting a stationary object and cause damage to the vehicle and operator injury or death.
- **Always** drive at speeds such that the plow does not bounce and be aware of the plow position while driving at all times.
- **Always** be aware that the purpose of the j-bolt is to break the connection between the plow and the winch, to prevent serious damage to the ATV if the plow is raised too high. The plow blade will drop suddenly if the j-bolt breaks, so always be sure there are no bystanders when you raise and lower the plow.
- **Never** raise the top of the plow above the headlights of the ATV, as it may damage the vehicle and plow.
- **Always** replace a deformed or broken j-bolt with the spare j-bolt included in the kit.

Read installation and operating instructions thoroughly.

WARN INDUSTRIES, INC. 12900 S.E. Capps Road,
Clackamas, OR USA 97015-8903, 1-503-722-1200, FAX: 1-503-722-3000
Customer Service: 1-800-543-9276
Dealer Locator Service: 1-800-910-1122 International Fax: 1-503-722-3005

⚠ CAUTION

MOVING PARTS ENTANGLEMENT HAZARD

Failure to observe these instructions could lead to minor or moderate injury

- **Always** take time to fully read and understand the installation and Operations Guide included with this product.
- **Never** operate this product if you are under 16 years of age.
- **Never** operate this product when under the influence of drugs, alcohol or medications.

Read installation and operating instructions thoroughly.

NOTICE

EQUIPMENT DAMAGE

- **Always** refer to the Installation and Specification Guide, supplied in the winch kit, for all wiring schematics and specific details on how to wire this WARN product to your vehicle.
- **Always** put the end of the actuator cable through the slot in the Termination Bracket. Terminating the cable through any other hole in the bracket will cause the bracket to not function properly and will drastically reduce the life of the actuator cable.
- **Never** overtighten u-bolt nuts. Overtightening may cause damage to vehicle frame.

Read installation and operating instructions thoroughly.

TABLE OF CONTENTS

Tools Required.....	page 2
Parts List.....	page 3
Torque Specifications.....	page 3
Installation	page 4-7
Troubleshooting	8
Maintenance/Care.....	page 8

NOTES

Note: *If a Warn winch mount is installed it does not need to be removed to install this plow mount.*

Note: *Loosening the factory front tube guard bolts may aid in installation of this kit. Be sure to re-tighten factory bolts when installation is complete.*

BEFORE YOU BEGIN

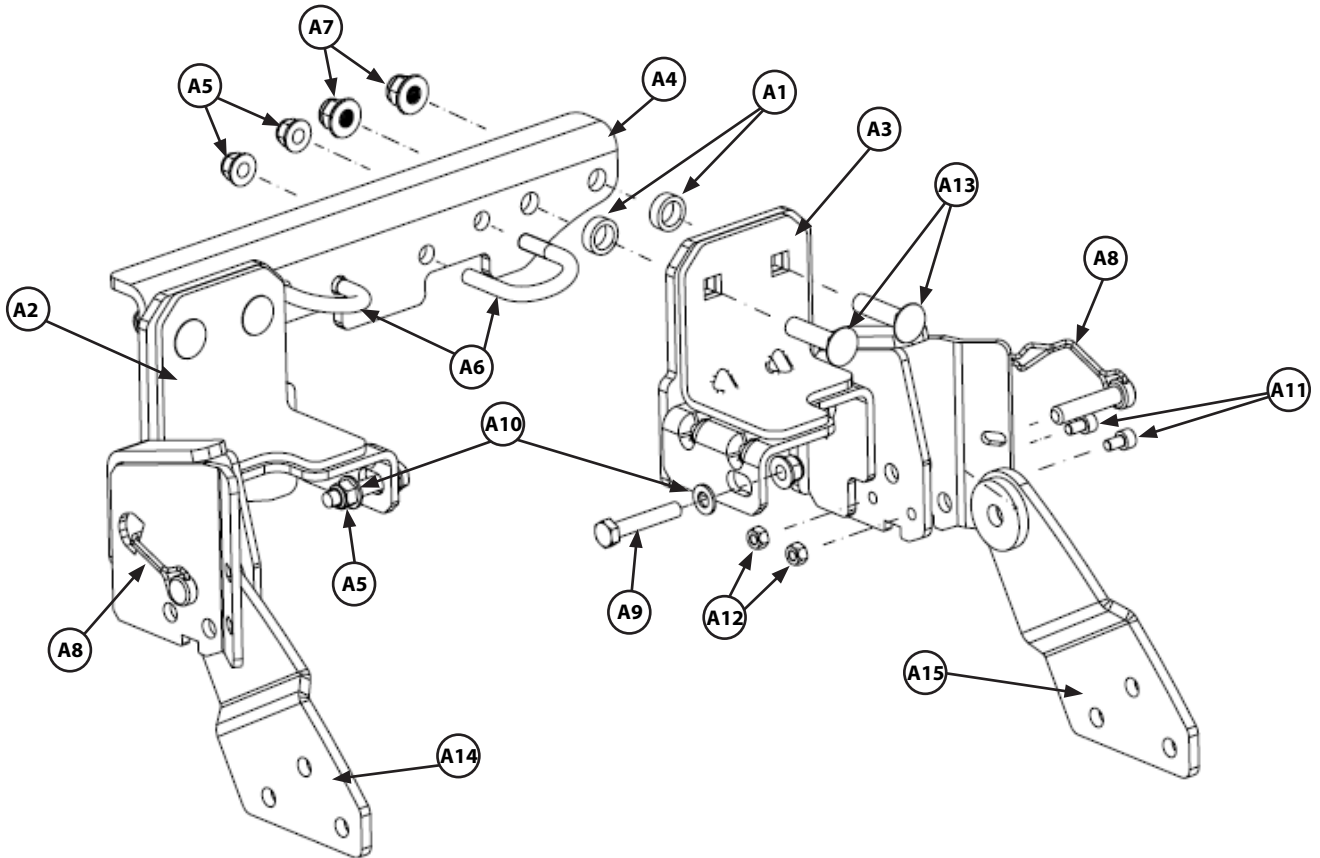
- Before beginning plow mount installation, allow the engine and exhaust system to cool and disconnect the negative cable from the battery.

TOOLS REQUIRED

- Ratchet
- Torque Wrench
- Sockets: 13mm, 15mm
- Wrenches: 13mm, 15mm
- Screwdrivers: Slotted, Phillips
- Allen Wrenches: 5mm

PARTS LIST

Item	Part Number	Qty	Description
A1	93529	4	Spacer
A2	93513	1	Right Weldment Assembly
A3	93514	1	Left Weldment Assembly
A4	93511	1	Rear Cross-Plate
A5	79146	6	M8 x 1.25 Hex Nut Flange
A6	82198	2	M8 - 1.25 x 32 x 45 U-bolt
A7	84392	4	M10 x 1.5 Elastic Nut Flange
A8	79712	2	3/8 Retaining Pin
A9	71587	2	M8 - 1.25 x 45 Hex Head Capscrew
A10	93105	2	M8 Flat Washer
A11	85743	4	M6 x 1.0 x 10 Capscrew
A12	87167	4	M6 x 1.0 Elastic Nut
A13	81707	4	M10 x 1.5 x 40 Carriage Bolt
A14	79340	1	Right Offset Tab
A15	79341	1	Left Offset Tab



TORQUE SPECIFICATIONS

Please use the recommended torque specifications when assembling this product unless otherwise specified in the instructions.

FASTENER SIZE	FASTENER TORQUE		FASTENER SIZE	FASTENER TORQUE	
	lb-ft	(N.m)		lb-ft	(N.m)
1/4"	8	(11)	M4	(2)	3
5/16"	17	(23)	M5	(4.5)	6
3/8"	30	(40)	M6	(7.5)	10
7/16"	48	(66)	M8	(18)	25
1/2"	74	(100)	M10	(37)	50
9/16"	106	(144)			
5/8"	148	(200)			
3/4"	269	(364)			

NOTICE: Torque does not apply to u-bolts.

INSTALLATION INSTRUCTIONS

1. Remove the six front 6mm bolts and two clip pins holding plastic guards in place. Save hardware, as it will be used for reinstall. See Figure 1.



Figure 1

2. Partially remove lower plastic guard. See Figure 2.



Figure 2

3. Slide rear cross-plate behind frame upright. See Figure 3.

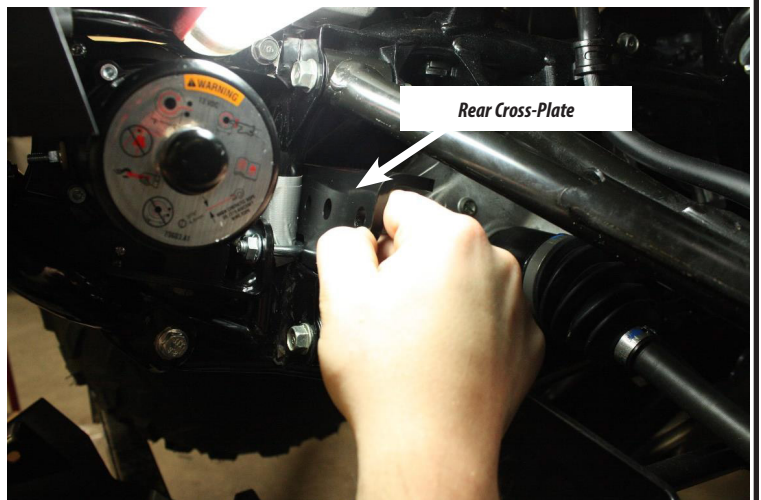


Figure 3

4. Attach rear cross-plate to frame using 8mm u-bolts (A6) and locknuts (A5). Do not tighten at this time.

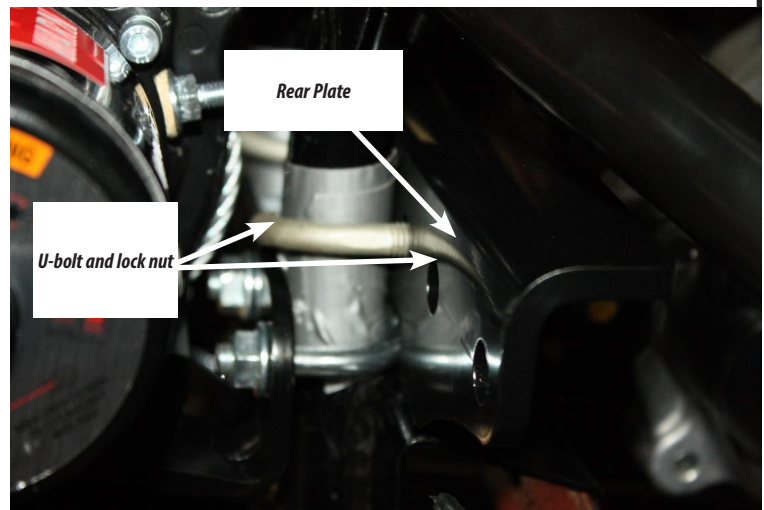


Figure 4

5. Remove two lower bolts from brushguard as shown in Figure 6. You will be using holes to fasten weldments.

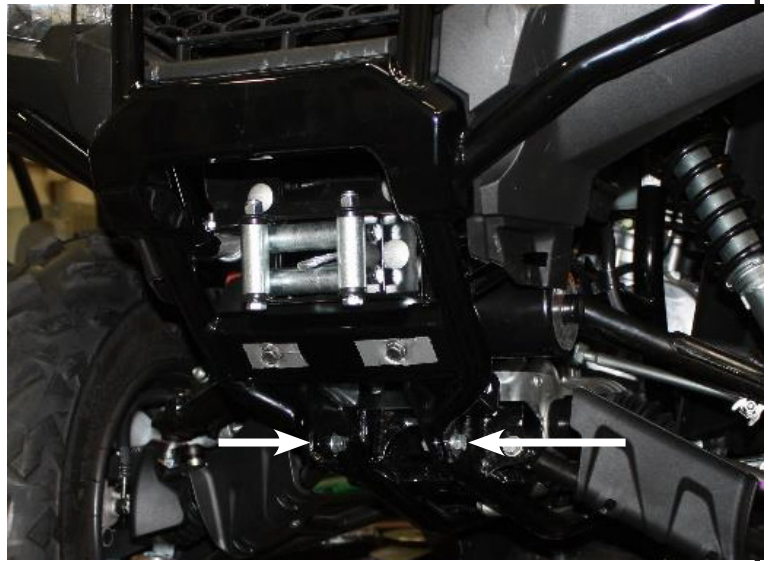


Figure 5

6. Using holes from brushgard removed in step 5, install left weldment assembly (A3) using 8mm capscrew (A9), washer (A10) and nut (A5). Repeat for other side.

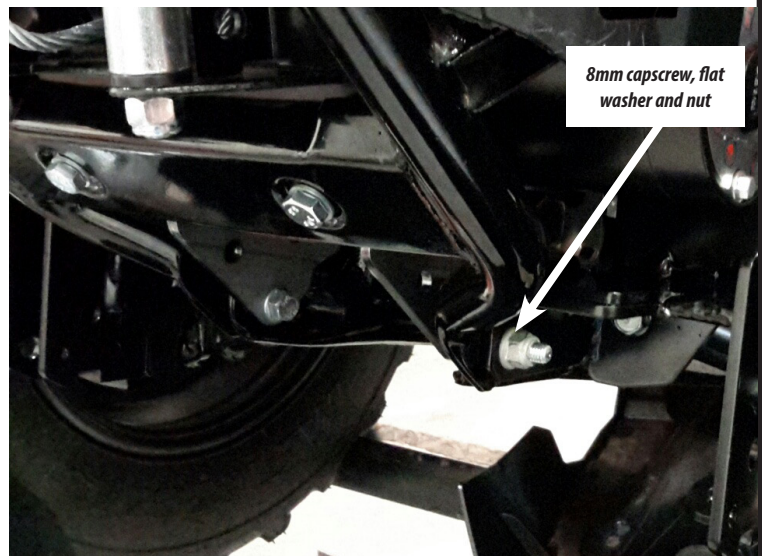


Figure 6

7. Insert two 10mm carriage bolts (A13), spacers (A1) through weldment and rear cross-plate (A4). Repeat for other side.
8. Secure carriage bolts to rear plate with locknuts (A7). Repeat for other side.
9. Tighten u-bolt nuts securely, but do not overtighten. **NOTICE** NEVER overtighten u-bolt nuts. Overtightening may cause damage to vehicle frame.

Tighten the rest of the hardware to torque specifications listed on page 3.

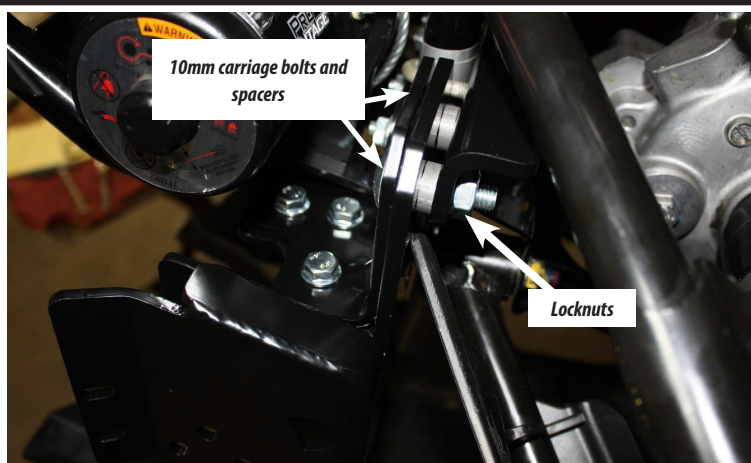


Figure 7

10. Install two 6mm socket head bolts (A11) and nuts (A12) to inner plate of the right and left weldment assemblies. Refer to parts list exploded view.

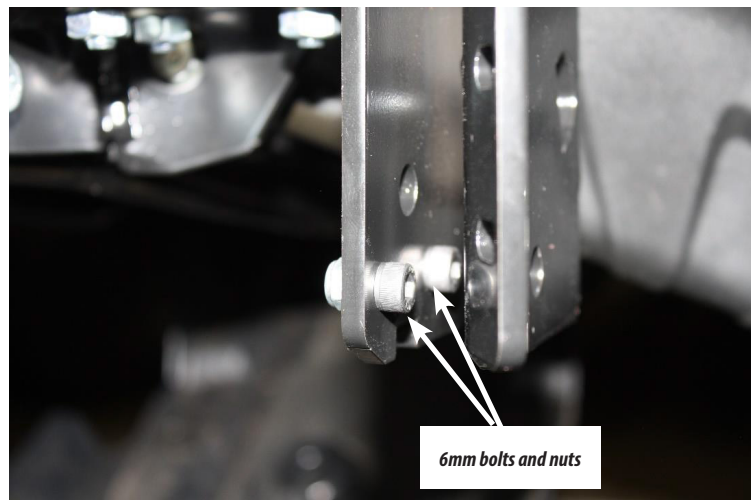


Figure 8

11. Reinstall lower plastic, removed in step 2, using original hardware.



Figure 9

12. Install offset tabs (A13 and A14) to inside of push tube assembly flanges. Pucks need to be facing inward and away from plow blade. Fasteners are included in the push tube kit.

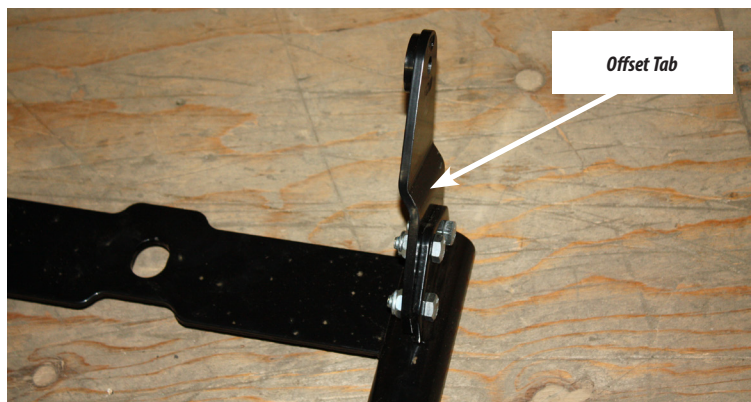


Figure 10

- Slide push tube assembly to weldment assemblies and secure using retaining pin (A8).

NOTE: Be sure to insert pin as shown. Proper installation will result in a firm “click” and snug pin lock-up.

Operation:

- Stage the plow assembly on level solid ground. See Plow operator guide “Installing the Plow” for more information.
- SLOWLY drive the vehicle up to the plow assembly with the vehicle as square to the plow as possible.
- Turn off the vehicle and set the parking brake. Lift the plow mount flange end of the push tube assembly up to the plow mount on the vehicle. Insert the plow mount flange into the plow mount.
- Double check that the plow is fully engaged with the plow mount, resting on the two lower ¼” socket bolt heads.
- With both alignment pucks seated into the plow mount the retaining pins can be inserted. Once inserted the retaining clips on the pins can be clipped through the hole in the back of the plow mount bracket. See Plow operator guide “Installing the Plow” for more information. The parts list view shown at the beginning of this document shows the pin location details for this application.
- Attach the winch line to the push tube assembly through the rope guide as described in the Plow operators guide, or attach the electric plow lift.
- Turn the ignition switch to ON, and operate the winch or electric lift to lift and lower the plow. The plow is now ready for operation. Read the Plow Operators Guide before operating plow.

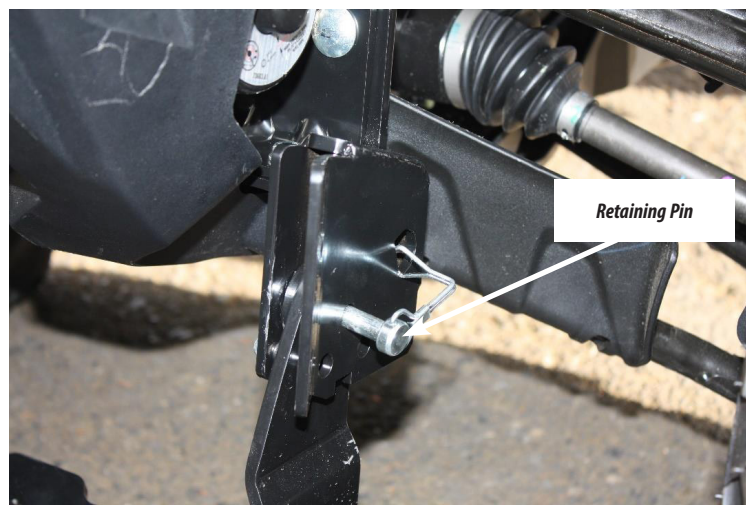


Figure 11



Figure 12



Figure 13

TROUBLE SHOOTING

- Avoid engaging or removing the plow from the vehicle on uneven, sloped, or soft ground. Doing so may misalign the plow mount and make it difficult for proper engagement and disengagement of the retaining pins.
- If you are having trouble getting an alignment puck into the plow mount, it may need some simple adjustment. Ensure that the plow and vehicle are sitting level. Ensure that the plow base is in the center latched position.
- After using the plow, the winch cable may begin to tangle around the drum. To fix this, pull off the plow assembly and free spool the cable out of the winch. Once the tangled cable is pulled off the drum, switch the winch out of free spool and winch the cable neatly back around the drum. Do NOT grab the cable or winch hook, instead use the winch hook strap provided with your winch and follow the guidelines as described in the winching guide.

MAINTENANCE / CARE

- Inspect all metal parts on the plow, plow mount, and related hardware prior to each use. Replace all parts that appear rusted or deformed.
- Inspect all nuts and bolts on the plow, plow mount, and related hardware prior to each use. Tighten all nuts and bolts that appear to be loose. Stripped, fractured, or bent bolts or nuts must be replaced.
- Check all cables prior to use. Replace cables that are worn or frayed.
- Check all moving and rotating parts. Remove debris that may inhibit the part from moving freely.
- See Warn Plow Operators Guide for more information.



WARNING

Failure to perform regular inspections and maintenance on the plow, plow mount, winch, and related hardware may result in vehicle damage and operator injury or death.

If you are having problems with your plow, please follow the steps below:

1. Reference the installation instructions for tips or notes.
2. Contact the dealer where you purchased the kit.
3. Call an authorized WARN Service Center from the warranty sheet included in the kit. Please have the following information available before calling; part number (listed on front of instructions), date of purchase, and make, model, and model year of ATV.
4. Contact WARN customer service at 1-800-543-9276 or www.warn.com. Again, please have the following information available before calling; part number (listed on front of instructions), date of purchase, and make, model, and model year of ATV.

The following replacement parts are available for purchase:

Part #	Description	Notes
83603	Quick Release Pin kit	2x 79712

CARELESS INSTALLATION AND OPERATION CAN RESULT IN SERIOUS INJURY OR EQUIPMENT DAMAGE. READ AND UNDERSTAND ALL SAFETY PRECAUTIONS AND OPERATING INSTRUCTIONS BEFORE INSTALLING AND OPERATING THIS PRODUCT.

