

Industrial Hoists: DC350

[PN 63674 Specifications & Parts List](#)
[PN 63675 Specifications & Parts List](#)
INDUSTRIAL HOIST DC350

- Lifting capacity of 350 kg (770 lbs)
- Most compact design for tight installations
- Features a heavy-duty, low-amp draw Permanent Magnet motor
- 136:1 gear ratio and spring brake provide reliable performance
- CE compliant
- Contactor and remote are sold separately

DC350 SPECS/PART NUMBER
Part Number: 63674 12V

Part Number: 63675 24V

Maximum Rated Load: 770 lbs (350kg)

Maximum Wire Rope Recommended: 5/32" 2800 lbs (1273kg) minimum breaking strength

Drum Barrel Diameter: 2.04" (52mm)

Drum Flange Diameter: 4.0" (102mm)

Distance Between Flanges: 2.87" (73mm)

Approximate Shipping Weight: 25 lbs (12 kg)

Gear Ratio: 136:1

Motor (PN 63674): 12 Volt DC Permanent Magnet 0.9 hp (0.67 kw)

Motor (PN 63675): 24 Volt DC Permanent Magnet 0.9 hp (0.67 kw)

Contactor for PN 63674 12V: PN 63926 *(Sold Separately)*
Contactor for PN 63675 24V: PN 63752 *(Sold Separately)*
Remote Control: PN 34462 *(Sold Separately)*
Standards Compliance:

- CE Electromagnetic Compatibility 89/336/EEC
- CE Machinery Directive 98/37/EEC
- ISO 4301-1 Machinery Class M3
- ISO 4301-2 Machinery Class M3
- ISO 4308-1 Machinery Class M3

PERFORMANCE DATA - By Rope Layer

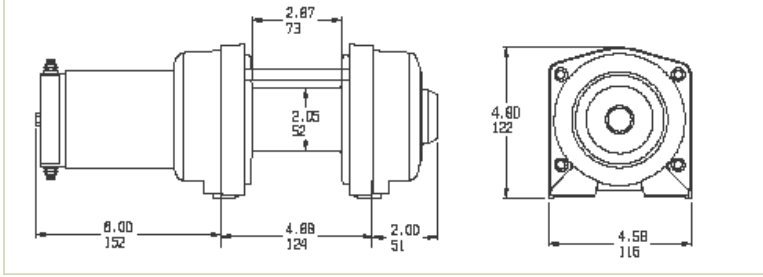
Layer	Line Pull lbs(kgs)	Line Speed ft/min(m/min)	5/32" (4 mm) Wire Rope Capacity ft.(m)
1	770 (350)	17.9 (5.5)	10 (3.1)
2	675 (307)	20.4 (6.2)	20 (6.1)
3	602 (274)	22.9 (7.0)	33 (10.1)
4	538 (245)	25.6 (7.8)	50 (15.2)

PERFORMANCE DATA 1ST LAYER - PN 63674 (12V)

Line Load lbs(kgs)	Line Speed ft/min(m/min)	Motor Current	Duty Cycle min/10 min
0 (0)	23.1 (7.0)	22	2.5
220 (100)	20.9 (6.4)	36	2.0
440 (200)	19.7 (6.0)	50	1.8
770 (350)	17.9 (5.5)	70	1.3

PERFORMANCE DATA 1ST LAYER - PN 63675 (24V)

Line Load lbs(kgs)	Line Speed ft/min(m/min)	Motor Current	Duty Cycle min/10 min
0 (0)	23.1 (7.0)	12	2.5
220 (100)	20.9 (6.4)	18	2.0
440 (200)	19.7 (6.0)	26	1.8
770 (350)	17.9 (5.5)	40	1.3



[Truck & Auto](#) | [Powersports](#) | [Works/Tools](#) | [Industrial](#) | [Powertrain](#) | [WARN Ware™](#) | [Corporate Partners](#) | [Customer Service](#) | [Dealer Locator](#) | [WARN Newsletter](#) | [Site Map](#)

Copyright Warn Industries, Inc All rights reserved. Legal Statement.
Warn Industries, Inc. standard purchase order Terms and Conditions